



# First Bank

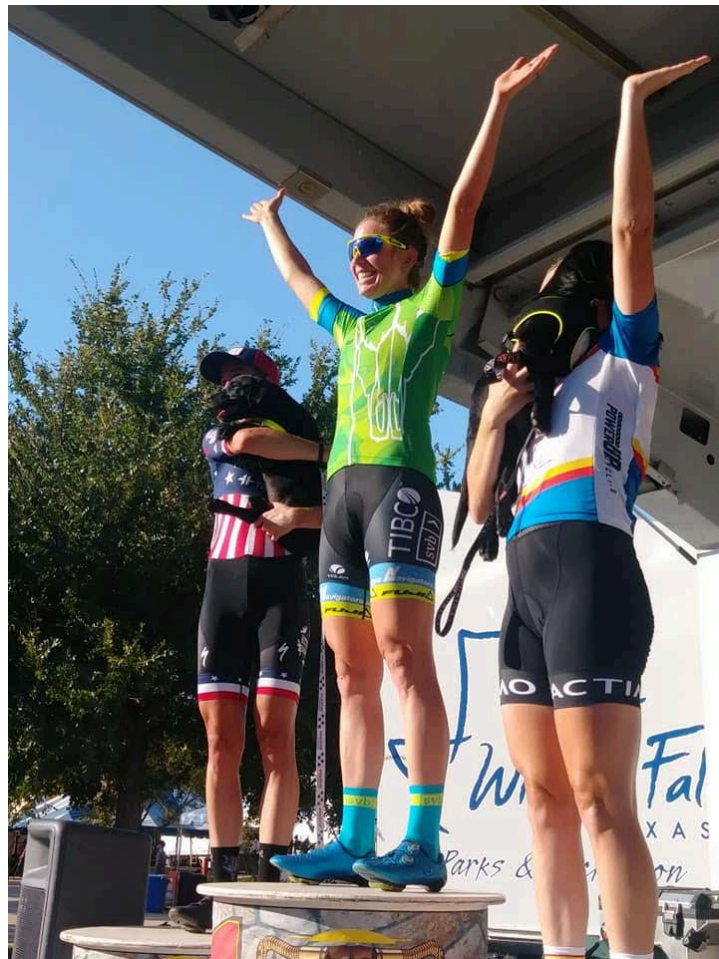
Member FDIC

*Invested in Our Community*

**2025**

## **HOTTER 'N HELL HUNDRED CRITERIUM**

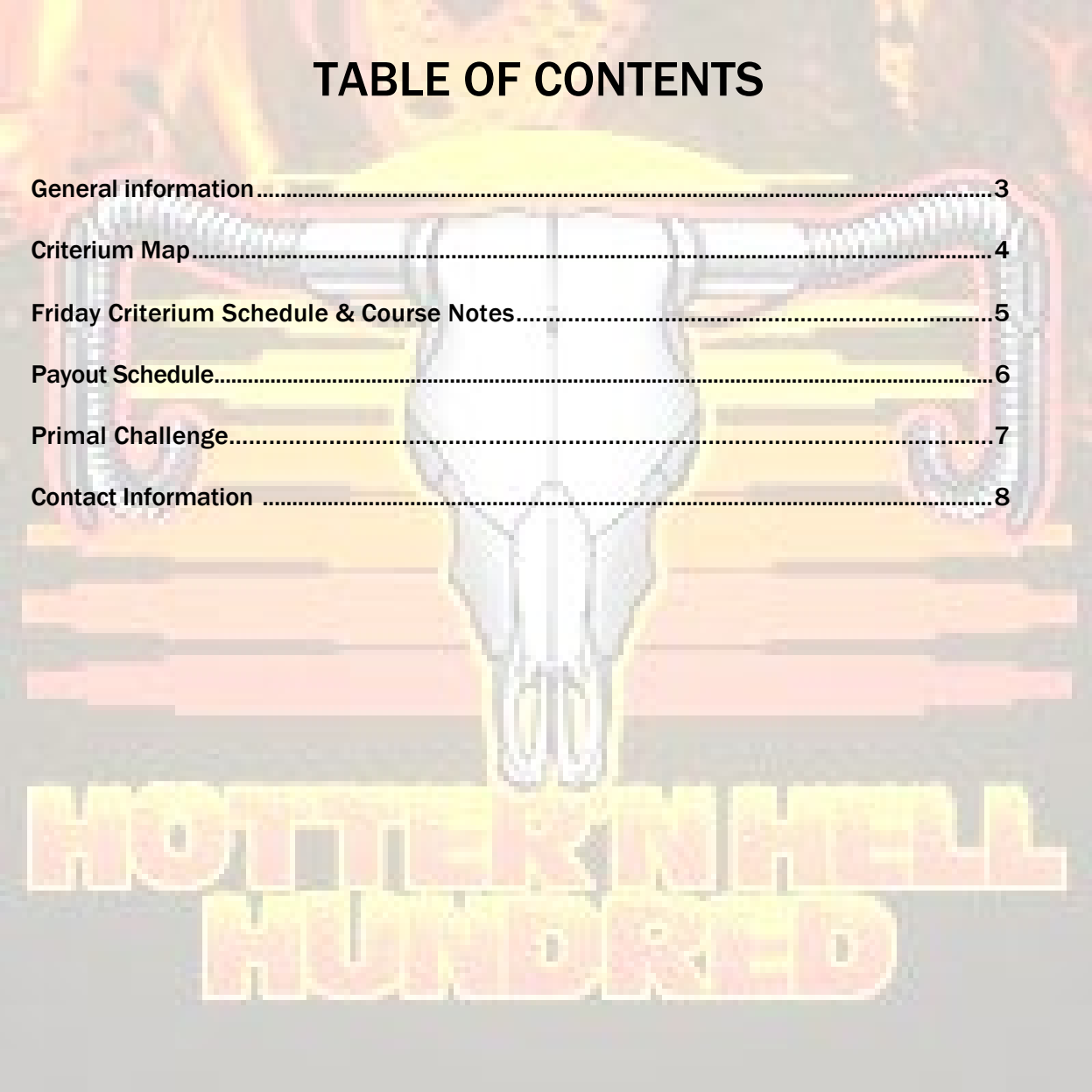
Not a USA Cycling Permitted Event



**AUGUST 22, 2025**

# CRITERIUM RACE MANUAL

## TABLE OF CONTENTS

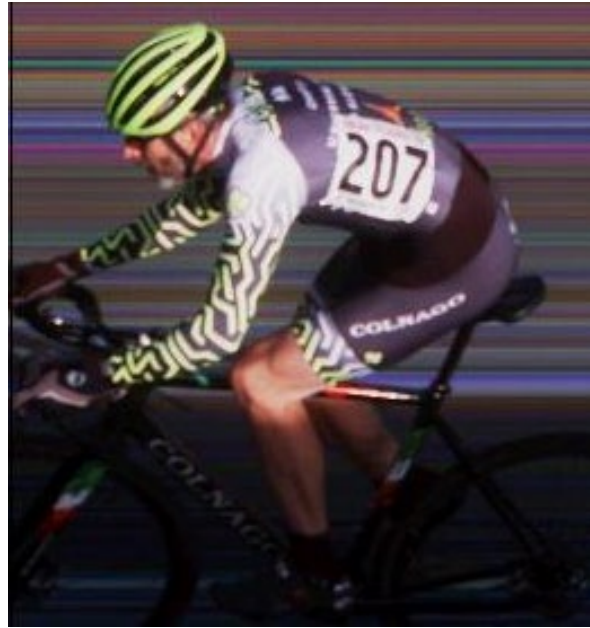


General information.....	3
Criterion Map.....	4
Friday Criterion Schedule & Course Notes.....	5
Payout Schedule.....	6
Primal Challenge.....	7
Contact Information .....	8

**HOTTER IN HELL  
HUNDREDS**

# General Information

**Race Numbers:** Competitors must wear BOTH numbers. Numbers on each SIDE should be pinned in the vertical, American-style. Refer to the pictures below for how it should look on EACH SIDE.



**Results:** Results will be posted near the finish area, shortly following each race. **All protests of individual race results must occur within 15 minutes of preliminary posting.** They are handled by the Timer and Chief Judge at the finish line. The top 3 race finishers must be present at the Awards Ceremony (please see Awards Ceremony heading for more details).

**Registration:** Registration is **ONLINE ONLY** at [www.bikereg.com/hh100](http://www.bikereg.com/hh100).

Online Registration closes Friday, August 22, 2025 at NOON CT. Registration is **ONLY** available ONLINE and closes at NOON the day of the race. **There is NO onsite registration.**

**Number Pick-Up:** Pre-registered riders can pick up their race numbers up to 30 minutes before their race start Friday at the Multi-Purpose Events Center Exhibit Hall (MPEC), room #8, located at 1000 5th St, Wichita Falls, TX. Number pick-up will be available from 3:30 PM - 6:15 PM. Criterium number pick-up will close 30 minutes prior to each race's start. Please print your own race manual if you require one.

**Awards Ceremonies:** A champion's jersey will be presented and the top 3 finishers will be honored on the finish stage podium immediately following each race. The top three finishers in each category's race on each day must attend the awards ceremony for their category wearing their team/race kit. **Awards presentations for each of the criteriums will occur at the finish line as soon as possible on or across from the announcer's stage.** Any interviews will be on site immediately after each race. Podiums & awards will take place immediately following each race.

**Champion Jerseys:** A champion's jersey will be awarded at the awards ceremonies to the winner of both the men's and women's races after each race.

**Criterium Payout:** Payout money will be paid 20-30 minutes after each race at the Multi-Purpose Events Center Exhibit Hall (MPEC), room #8, located at 1000 5th St, Wichita Falls, TX. **Medals will be awarded at the Awards**

Ceremonies Friday on-stage. Prize money that is not picked up Friday evening will be forfeited. Prize money will NOT be mailed. Medals can be mailed at your cost upon request within 2 weeks of the race. You must have your race number or ID to pick up prize money; if you wish for a teammate to pick up your prize, please give them your bib number. Monetary prizes are all paid in cash. A detailed payout schedule is included on page 6 of this race manual.

**Consumer Show:** The consumer show is open from 3:00 PM – 8:00 PM on Thursday, 1:00 PM – 9:00 PM on Friday, and from 9:00 AM – 2:00 PM on Saturday. Many of our prizes come from these vendors, so please support them.

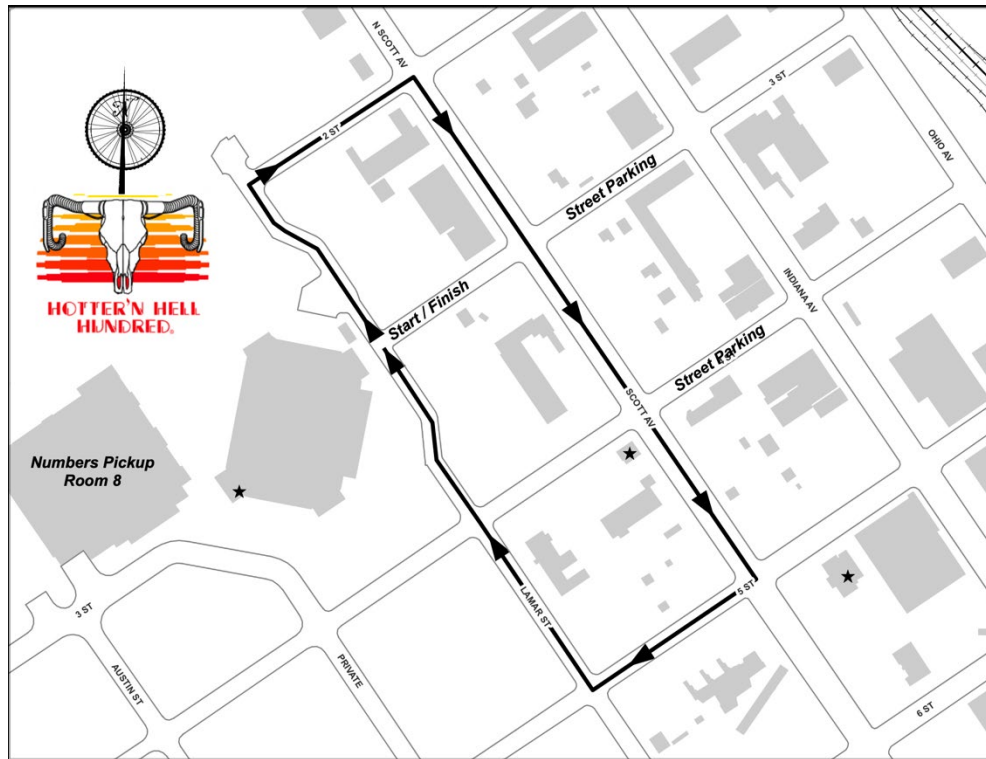
**Directions/ Parking:** The start/finish for Friday evening is located at the intersection of Lamar St. and 3rd St. Please utilize street parking on the outside of the course on 3rd and 4th Streets or park in MPEC designated parking. Please do NOT block driveways and follow any posted sign notations when arriving/parking.

**Competition Manual / Rules:** The version placed online prior to the race is subject to change until August 22; please check after then for the latest version. Communiqués may be issued by the Race Director to amend the competition manual. It is the rider's responsibility to familiarize themselves with the event and the race course before the start of the race. Riders may not take any other route or short cut.

**Kids Race:** The U9 Kids Bike Race is a fun and friendly event designed for children under 9 years old. The course is short, safe, and allows young riders to enjoy the excitement of racing in a supportive environment. All bike types are welcome, including those with training wheels, as long as they're in safe working condition. Helmets are mandatory for all participants. Parents are encouraged to run or ride alongside the kids. Every child will receive a medal or ribbon at the finish line, and the top three will be recognized. Please arrive at least 30 minutes early for check-in and number pickup. Let's keep it safe, supportive, and all about having fun!

**Special Olympics:** The Special Olympics Bike Race is a fun and empowering event for athletes of all abilities. Riders will compete on a safe, well-marked course with support from volunteers throughout. All bikes, including adaptive equipment, are welcome, and helmets are required. Please arrive 30 minutes early for check-in and bike check. There will be finisher medals for all participants.

# Criterion Map



## FRIDAY AUG 22 CRITERIUM SCHEDULE

Category	Start	Duration	Prize List	Field	Online PreReg Price
Special Olympics	4:30 p.m.	20 min	Medals/3	n/a	\$0
Kids Race	4:30 p.m.	20 min	Medals/3	n/a	\$0
Women Open	5:00 p.m.	60 min	\$630/5	75	\$60
Men Open	6:30 p.m.	60 min	\$630/5	125	\$60

Held on a flat 1 km rectangular course.

**Staging:** Staging will begin behind the start/finish line 10 minutes prior to or immediately following the prior race.

**Call-ups** may be made for distinguished riders in the field.

**Primes:** Cash or merchandise primes might occur throughout. All criterium primes can be picked up at the finish stage Friday night. Prime prizes not claimed by 8:15 pm Friday evening are forfeit.

**Prizes/Payout:** Payout for the criterium race will be available at number pick-up located at the Multi-Purpose Events Center Exhibit Hall (MPEC), room #8, located at 1000 5th St, Wichita Falls, TX after each race. Prizes MUST be picked up by 8:15 pm Friday evening. Prizes not claimed by 8:15 pm Friday evening are forfeit.

**Podiums:** The Top 3 on the race for each category MUST report to the stage for podiums immediately following their race to receive a medal. Women’s podiums are held before the men’s race begins, and men’s podiums immediately after their race.

**Wheel Pit:** Event Support Services will provide neutral support mechanical and spare wheels for Criteriums. If you have specific needs for your wheel size, rotors and cassette check with neutral support prior to the start of your race.

**Free Lap:** There will be a free lap given to riders involved in eligible mishaps. Eligibility for a free lap is the sole decision of the race staff official present in the pit. Announcers’ or neutral support personnel’s word is not authoritative. Riders must ride or run in the direction of the race or dismount and run backwards just off the course to enter the pit.

**Pulled Riders:** The Chief Referee may ask a rider who is out of contention to withdraw. The decision to pull riders off the back of the field is at the Chief Referee’s discretion and will happen at the finish line. Pulled riders will be placed. Pulling oneself results in a DNF.

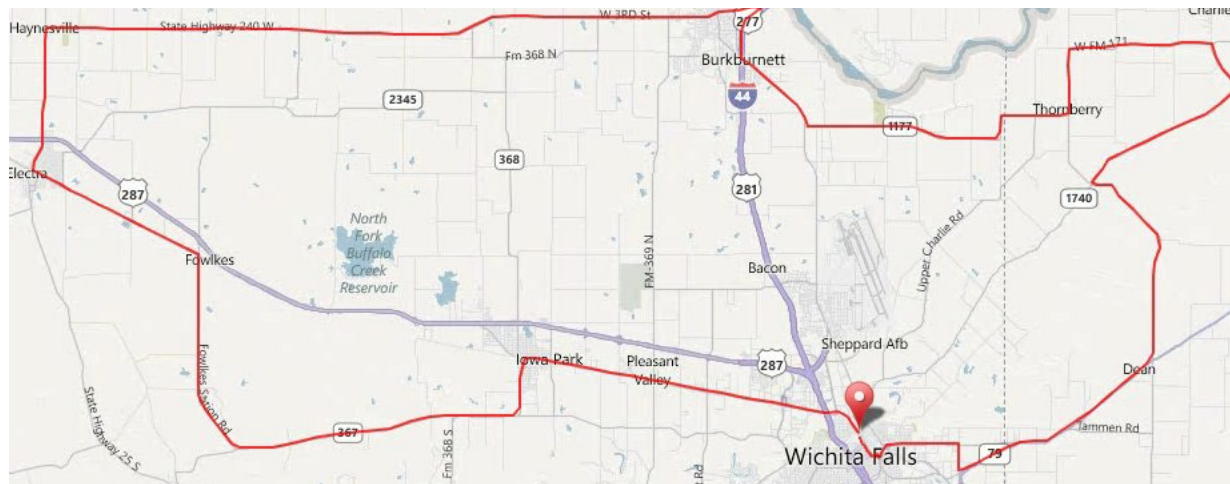
**Extreme Conditions:** The Chief Referee may alter the duration of or cancel the race due to extreme conditions, including but not limited to extreme heat, flooding, lightning, or dangerously high winds. The creation of a splash zone in the criteriums is likely in the event of extreme (>100 deg F.) heat. Splash zones will close when the wheel pit closes. There will be no feeds in the criteriums.

## Payout Schedule

Men Open & Women Open ONLY

Place	Friday Crit
1	\$250
2	\$150
3	\$100
4	\$80
5	\$50
<b>Total</b>	<b>\$630</b>

# Primal Challenge Map



## Saturday AUG 23 Primal Challenge SCHEDULE

Category	Start	Distance	Prize List	Field	Online PreReg Price
<b>Women Open</b>	<b>6:45 a.m.</b>	100 miles	\$250/1	100	\$70
<b>Men Open</b>	<b>6:45 a.m.</b>	100 miles	\$250/1	100	\$70

**The Primal Challenge:** This is a fast-paced, self-supported 100-mile endurance ride designed for experienced cyclists ready to push their limits. The ride will roll out at **6:45 AM** as the first group of the day, featuring only two competitive categories: **Men’s Open** and **Women’s Open**. This event is best suited for **Category 1–3 riders** or those with similar fitness and race experience.

The course includes **neutral rest stops every 10 miles**, allowing riders to refuel and regroup as needed. Volunteers will be stationed at key intersections, and local law enforcement will assist with traffic control, but **riders must follow all traffic laws**, stay to the right of the yellow line, stop at stop signs, and ride safely at all times.

**Number Pick-Up:** Pre-registered riders can pick up their ride numbers Friday at the Multi-Purpose Events Center Exhibit Hall (MPEC), located at 1000 5th St, Wichita Falls, TX. Number pick-up will be available Friday from 10:00 AM to 9:00 PM.

**Payout:** Payout for the primal challenge will be available at the podium ceremony following the ride

**Podiums:** The Top 3 men and women categories **MUST** report to the stage for podiums immediately following their ride.

## Payout Schedule

Men Open & Women Open ONLY

Place	Saturday Ride
1	\$250
<b>Total</b>	<b>\$250</b>

## Contact Information

### Hotter'N Hell Criterium Race Director:

Pablo Cruz  
pablo.hn05@gmail.com  
(940) 285-1642

### Registration & Results:

Nikki Cyp  
NikkiCyp@gmail.com

**KEEP UP TO DATE ON ALL THE HAPPENINGS OF THE HOTTER'N  
HELL WEEKEND BY LIKING OUR FACEBOOK PAGE &  
FOLLOWING US ON TWITTER & INSTAGRAM**

<https://www.facebook.com/groups/29445451993/?fref=ts>

<https://twitter.com/HotternHell100>

<https://www.instagram.com/thehh100>